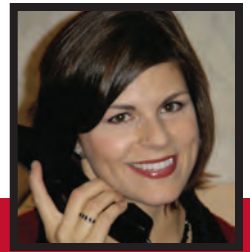


Concierge Newsletter



March 2010

HONEYBAKED HAM HOLIDAY EMPLOYEE PURCHASE PROGRAM

We are proud to bring back the Holiday Employee Purchase online ordering with group delivery right to your building.

Follow the instructions below to log on and submit your order. Please submit before the order deadline date indicated on your building's customized order site.

HoneyBaked will deliver products to your location. All orders will need to be picked at the designated time. Pick up information, menus and pricing will be available on the web site. The website will be available on March 1st. Instructions for ordering:

1. Go to www.hbhgifting.com to access your building's order web page.
2. You will be prompted to enter your Company Key Code.

BUILDING	Online Key Code	Deadline to order	Delivery date
2100 Ross	Ross	Mar 28, midnight	Wed, Mar 31, 11-12
Trammell Crow Center	TCC	Mar 28, midnight	Wed, Mar 31, 1-2 2100
McKinney	MCK	Mar 28, midnight	Thurs, April 1, 11-12

Please use the code for the building in which you want to pick up your items.

3. Register to view menus and pricing. (You can use your password to return to, or amend, your order at any time).
4. When you are ready, enter your selections and finalize your order. Payment by MasterCard, Visa, Discover and American Express are accepted.

Product Information

The product will be packaged with an ice pack, which will ensure freshness without refrigeration for 6-8 hours. Hams purchased can be kept refrigerated for 6-8 days. Turkey breasts purchased can be kept refrigerated for 4-5 days and whole turkeys can be kept refrigerated for 7-8 days. To preserve shelf life for longer left over consumption time after the holiday, freeze the product and move to the refrigerator 2 days before serving. All products are fully cooked. Heating may be suggested or required for certain items. Side dishes and deserts will be delivered frozen and are ready to heat and serve

SEA WORLD SAN ANTONIO

Sea World San Antonio is offering their discounts again in 2010. My traditional consignment account has been replaced with an online program. Instead of actually buying the SeaWorld tickets from me, you can now visit www.seaworld.com to purchase your tickets online. 1) visit www.SeaWorld.com 2) Click on "Begin Purchase" 3) Under San Antonio, click on "Enter Promotion Code" 4) Enter TCCD. You will receive an \$8 discount off the one day adult or child one-day admission or \$7 off an adult or child two-day ticket.

Regular admission is \$58.99 adult (\$63.78 with tax) and \$49.99 child (ages 3-9) (\$54.05 with tax). Your discount prices are:
One Day Admission \$9 off
\$49.99 adult (with sales tax \$54.05)
\$40.99 child (with sales tax \$44.32)

Adults @ Kids Price Plus Second Day Free
\$49.99 adult (with sales tax \$54.05)
\$49.99 child (with sales tax \$54.05)

SIX FLAGS OVER TEXAS CONCIERGE DISCOUNTS

One day ticket is \$27 (\$53.99 for adult and \$ 33.48 for child age 3 through 48" at the gate)
Season Pass is \$65.00

Play Pass is \$55.00(Unlimited admissions for one person like season pass but without the Season Pass value book)

I accept cash or check and they are available now for Spring break.

Concierge Comments

Will March bring warmer weather...we will see. Either way, lots of fun is happening here that can brighten your spirits anyway. Dallas Blooms at The Dallas Arboretum is from March 6 through April 11 and is always a treat to see the color and beauty. It is a great opportunity to relax with a picnic. Grapevine is having their 6th Annual Chocolate Fest March 12-13, 2010. For more sweet information visit www.chocolatefestgrapevine.org

I am offering discounted Texas Rangers Baseball tickets again this year! Please see article in this newsletter. I am taking orders now!

I am also taking orders for all of the Dallas Summer Musicals at Fair Park and The Lexus Broadway Series at The Winspear Opera House. See article on last page of this newsletter for shows and dates.

Please consider donating blood on Tuesday, March 23 in the fifth floor conference room in Trammell Crow Center. Walk-ins will be accepted. Thank you very much for your care and generosity.

Concierge services will not be available on March 26. Thank you for planning your purchases accordingly.

Daylight Saving Time begins Sunday, March 14 so turn your clocks ahead one hour.

Best Regards,

Jenny V. Crossland

The normal Concierge Desk hours are:
Monday through Friday, 10:00 am to 2:00 pm
Jenny V. Crossland | Corporate Concierge at
Trammell Crow Center
CB Richard Ellis | Asset Services
2001 Ross Avenue, Suite 325 | Dallas, TX 75201
T 214 863 4154 | F 214 863 4248
jenny.crossland@cbre.com | www.cbre.com

For those not in the Trammell Crow Center, you can go to either the security desk at your building or the building management office. A form can be filled out and sent to me through interoffice mail with attached payment of cash or check. Allow one week for delivery back to the security desk or management office in your building

NASHER SCULPTURE CENTER PRESENTS JAUME – PLENSA: GENUS AND SPECIES

Exhibition on view January 30 through May 2, 2010

The Nasher Sculpture Center will exhibit the works of contemporary Spanish sculptor Jaume Plensa from January 30 through May 2, 2010. Jaume Plensa: Genus and Species represents the Nasher's first major exhibition of the work of a living artist.

Jaume Plensa: Genus and Species will be accompanied by a lavishly illustrated, four-color catalogue with a new scholarly essay by Curator Jed Morse, contextualizing Plensa's work for an American audience.

The Nasher Sculpture Center is open Tuesday through Sunday from 11 am to 5 pm and until 11 pm for special events. General Admission to the Center is \$10 for adults, \$7 for seniors, \$5 for students, and free for members and children 12 and under. For more information, visit www.NasherSculptureCenter.org.

March

Special Events

- 3-7 Dallas Auto Show
Dallas Convention Center (214) 939-2700
- 5-7 Dallas Spring Home & Garden Show
Dallas Market Hall (214) 655-6181
- 5-7 North Texas Irish Festival
Fair Park Dallas (214) 670-8400
- 5-7 Savor Dallas 2010
Dallas Arts District (214) 744-6642
- 6-31 Dallas Blooms
Dallas Arboretum (214) 515-6500
- 6 Target First Saturdays
Nasher Sculpture Center (214) 242-5100
- 9 Dallas Architecture Forum - Julie Cohn
Dallas
- 11 NasherSalon Series - Lauren Bacall
Nasher Sculpture Center (214) 242-5100
- 12-21 Six Flags Over Texas Spring Break Out
Six Flags Over Texas (817) 530-6000
- 13 Discover Dallas Day - Famous & Infamous
Women of Dallas
Old Red Museum of Dallas County History & Culture (214) 745-1100
- 13 31th Annual Greenville Avenue St. Patrick's Day
Parade
Dallas
- 13-14 American Volleyball Challenge Tournament
Dallas Convention Center (214) 939-2700
- 13-14 International Carnival Dance Party
Grand Hyatt DFW (972) 973-1401
- 14 Rock 'n' Roll Dallas Half Marathon
Dallas Convention Center (214) 939-2700
- 16-20 Spring Fling
Dallas Heritage Village (214) 413-3669
- 17 Brinker International Forum - David Frost &
Frank Langella
AT&T Performing Arts Center (214) 880-0202
- 20 Around the World Through Samar Spring Cooking
Class Stephan Pyles
Dallas (214) 999-1229
- 20-21 ArtScape
Dallas Arboretum (214) 515-6500
- 20 Patriot Cup
Gerald J Ford Stadium - SMU (214) 768-4263
- 23-31 Spring Awakening
AT&T Performing Arts Center (214) 880-0202
- 24-28 Disney On Ice Presents Let's Celebrate
American Airlines Center (214) 222-3687
- 25 Dallas Architecture Forum - Rafael Vinoly
Dallas Museum of Art (214) 922-1200
- 26-29 US Fencing Veterans NAC-E
Dallas Convention Center (214) 939-2700
- 27 Gone to Texas Gala
Eddie Deen's Ranch at Downtown Dallas
- 27 TX TOUGH Ultra Relay & 5K Fun Run
Cotton Bowl at Fair Park (214) 670-8400
- 28-31 Dr Pepper Dallas Cup XXXI
Frisco

Exhibits

- 1-31 Blossoming Stone: Qing Dynasty Jade
Crow Collection of Asian Art (214) 979-6430
- 1-21 Performance/Art
Dallas Museum of Art (214) 922-1200
- 1-31 23rd Carroll Harris Simms Black Art Competition
and Exhibition
African American Museum at Fair Park (214) 565-9026
- 1-31 Bodies...The Exhibition
West End Historic District (214) 741-7180
- 1-31 The Life of Toussaint L'Ouverture by Jacob Lawrence
Dallas Museum of Art (214) 922-1200
- 1-31 Seizing the New World: Recent Paintings by Yang Jin
Long
Crow Collection of Asian Art (214) 979-6430
- 1-31 Women's Work: Selected Prints from the Collection
of the Montgomery Museum of Fine Arts
Women's Museum, The : An Institute for the Future (214) 915-0860
- 1-31 Jaume Plensa: Genus and Species Exhibit
Nasher Sculpture Center (214) 242-5100
- 1-31 Selections From The Collections of Darrell Walker
and Elliot Perry
African American Museum at Fair Park (214) 565-9026
- 1-31 Gustav Stickley and the American Arts and Crafts
Movement
Dallas Museum of Art (214) 922-1200
- 1-31 China: Impermanent Beauty 1996-97
Crow Collection of Asian Art (214) 979-6430
- 1-31 The Lens of Impressionism: Photography and
Painting Along the Normandy Coast, 1850-1874
Dallas Museum of Art (214) 922-1200
- 1-31 Boolean Valley
Nasher Sculpture Center (214) 242-5100
- 13 Modern Masters Studio Workshops: Layers of
Meaning
Nasher Sculpture Center (214) 242-5100
- 1-13 Boom
Kitchen Dog Theater (214) 953-1055
- 1-14 Phantom
Music Hall at Fair Park (214) 565-1116
- 1-31 The Beauty Plays
Dee and Charles Wyly Theatre (214) 880-0202
- 1-21 Hansel & Gretel
Dallas Children's Theater (214) 978-0110
- 3 Beauty and the Beast
Black Academy of Arts and Letters (214) 743-2440
- 7 Don Pasquale
Margot and Bill Winspear Opera House (214) 880-0202
- 12-14 Romeo and Juliet
Margot and Bill Winspear Opera House (214) 880-0202
- 17-18 Dominic Walsh Dance Theater
Margot and Bill Winspear Opera House (214) 880-0202
- 19-31 The Lion, The Witch, and The Wardrobe
Dallas Children's Theater (214) 978-0110
- 19-20 Trent Armand Kendall
Black Academy of Arts and Letters (214) 743-2440

Theatre and Dance

Music and Concerts

- 1 Greater Dallas Youth Orchestra Presents "Young
Virtuoso"
Morton H. Meyerson Symphony Center (214) 871-4550
- 1 Piano Latino Featuring Eddie Palmieri, Michel
Camilo and Alfred Rodriguez
Margot and Bill Winspear Opera House (214) 880-0202
- 3 State Radio
House of Blues Dallas (214) 978-2583
- 4 NeedToBreathe
House of Blues Dallas (214) 978-2583
- 5-6 Deon Cole - Comedy Night at the Muse
Black Academy of Arts and Letters (214) 743-2440
- 5-7 Jazz at Lincoln Center Orchestra Featuring Wynton
Marsalis
Morton H. Meyerson Symphony Center (214) 871-4550
- 6 Mu Phi Epsilon Concert Series - North Dallas
Trombone Choir
Central Library J. Erik Jonsson (214) 670-1400
- 8 A Special Evening with the Pointer Sisters
Margot and Bill Winspear Opera House (214) 443-1000
- 9 John Mayer
American Airlines Center (214) 222-3687
- 11 Taylor Swift in Concert
American Airlines Center (214) 222-3687
- 12-14 Bowfire
Morton H. Meyerson Symphony Center (214) 871-4550
- 13 Malcolm Jamal Warner - Poets N Jazz #2
Black Academy of Arts and Letters (214) 743-2440
- 13 Mu Phi Epsilon Concert Series - Kay Williams, piano
Central Library J. Erik Jonsson (214) 670-1400
- 15 Dallas Chamber Music: Jupiter String Quartet
Caruth Auditorium - SMU- Meadows School of Arts (214) 768-2787
- 16-21 Rain: A Tribute To The Beatles
Music Hall at Fair Park (214) 565-1116
- 16 Sammy's Songbook
Morton H. Meyerson Symphony Center (214) 871-4550
- 18-21 Mozart: Flute Concerto No. 2
Morton H. Meyerson Symphony Center (214) 871-4550
- 19 Adam Del Monte
Owen Fine Arts Center - SMU - Meadow School of Arts (214) 768-2787
- 19 The Black Eyed Peas with LMFAO
American Airlines Center (214) 222-3687
- 20 Mu Phi Epsilon Concert Series - Sara Chason, Robin
Garner, and Laurie Shulman
Central Library J. Erik Jonsson (214) 670-1400
- 21 Soweto Gospel Choir
Margot and Bill Winspear Opera House (214) 880-0202
- 25-28 Orff: Carmina Burana
Morton H. Meyerson Symphony Center (214) 871-4550
- 26-27 JoMarie Payton
Black Academy of Arts and Letters (214) 743-2440
- 27 Bancroft Family Concert - Music for Clarinet, Strings
and Piano
Dallas Museum of Art (214) 922-1200
- 28 Figaro, Figaro, Figaro!
Morton H. Meyerson Symphony Center (214) 871-4550
- 31 Figaro, Figaro, Figaro!
Morton H. Meyerson Symphony Center (214) 871-4550

Sports

American Airlines Center (214) 222-3687

- 3 Dallas Mavericks vs Minnesota Timberwolves
- 5 Dallas Mavericks vs Sacramento Kings
- 10 Dallas Mavericks vs New Jersey Nets
- 13 Dallas Mavericks vs New York Knicks
- 17 Dallas Mavericks vs Chicago Bulls
- 20 Dallas Mavericks vs Boston Celtics
- 23 Dallas Mavericks vs Los Angeles Clippers
- 29 Dallas Mavericks vs Denver Nuggets

- 2 Dallas Stars vs Los Angeles Kings
- 4 Dallas Stars vs St. Louis Blues
- 12 Dallas Stars vs Los Angeles Kings
- 14 Dallas Stars vs Colorado Avalanche
- 16 Dallas Stars vs San Jose Sharks
- 18 Dallas Stars vs Philadelphia Flyers
- 20 Dallas Stars vs Ottawa Senators
- 21 Dallas Stars vs Phoenix Coyotes
- 31 Dallas Stars vs San Jose Sharks

Fair Park Coliseum (214) 670-8400

- 1 Dallas Generals vs Texas Fuel
- 6 Dallas Generals vs Texas Fuel

VENDOR SALES FOR MARCH

2100 Ross Avenue (formerly San Jacinto Tower)

- 3/3/2010 CJ's Treasures
- 3/4/2010 Belle du Jour
- 3/9/2010 Designer Fragrances
- 3/10/2010 Designer Fragrances
- 3/11/2010 Austin Nuts
- 3/16/2010 Mountain Man
- 3/17/2010 Mountain Man
- 3/18/2010 Lisa's Jewelry Box
- 3/19/2010 Lisa's Jewelry Box
- 3/22/2010 Brazilian Soul Jewelry
- 3/23/2010 Costco
- 3/24/2010 Costco
- 3/25/2010 Gurly Gurly
- 3/26/2010 Gurly Gurly
- 3/30/2010 Scentsy

Every Friday **Maya Flowers**

SAVE 20% AT GREAT WOLF LODGE IN GRAPEVINE

Visit Greatwolf.com or call 1-800-693-9653 to make reservations. Use Corporate Code CORP750A when prompted to receive your 20% off the best available guest room rate.

HERTZ RENTAL CONCIERGE RATE

I have found a great rate for your rental car needs. Call **1-800-654-3131** or www.hertz.com and tell them that your Corporate Concierge sent you and give them the **Corporate Discount Program Identification Number (CDP-ID # 1630967)** for whatever city you need the transportation and you will receive a minimum of up to 5-20% discount.

BODIES THE EXHIBITION

Dallas, TX at West End (603 Munger Ave)
Both captivating and edifying, Bodies ...The Exhibition unveils the many complex systems, organs and tissues that drive every aspect of our daily lives and unite us all as humans. Featuring over 200 specimens consisting of whole-bodies and individual organs that have been meticulously dissected and preserved through an innovative process, Bodies ...The Exhibition will enlighten, empower, fascinate and inspire.

To Order Your Tickets:

1. Go to: <http://www.bodiestheexhibition.com/dallas/>
 2. Click "PURCHASE TICKETS" BOX
 3. Under Self-Guided Tour, select FIND TICKETS
 4. Select the date & time for your visit.
 5. Enter the Quantity
 6. Use promo code CCI (all caps) to get the discount.
- The promotion code can be used online, by phone or at the box office.

\$5 DISCOUNT OFF EXECUCAR AND \$2 OFF SUPER SHUTTLE

ExecuCar is pleased to offer all Corporate Concierges and their clients a special \$5.00 discount from the normal rates and \$2 off of the Super Shuttle rates. Simply go online to <http://www.supershuttle.com/default.aspx?GC=DB4CU> and enter group code: DB4CU to receive your instant discount! For groups, more information or for VIP amenities, call Steve at 972-615-2410.

GAYLORD HOTELS: SECOND NIGHT—FREE — THE UNFORGETTABLE ANNIVERSARY WEEKEND

Celebrate a day you'll always remember with an anniversary you'll never forget. Make your anniversary as memorable as the day you said, "I do" with a romantic getaway celebration at Gaylord Texan. And, we'll help you cherish it even more by giving you your second night FREE* when you book the first night of your special anniversary stay. Plus, you'll get admission for two to the hotel's impressive Glass Cactus nightclub.** Book now!

Get your second night free when you book the first night during the month of your anniversary.* Offer valid now through August 30, 2010. To Book: Please call the reservations agents at (817) 778-2000, or book online at www.gaylordtexan.com

LEXUS BROADWAY SERIES

SPRING AWAKENING

8 TONY AWARDS, INCLUDING BEST MUSICAL
Based on the infamous 1891 Frank Wedekind play, SPRING AWAKENING features an electrifying score by Duncan Sheik, book and lyrics Steven Sater, direction by Michael Mayer and choreography by the award-winning Bill T. Jones. Set against the backdrop of a repressive and provincial late 19th century Germany, SPRING AWAKENING tells the timeless story of teenage self discovery and budding sexuality as seen through the eyes of three teenagers. Haunting and provocative, SPRING AWAKENING celebrates an unforgettable journey from youth to adulthood with a power, a poignancy and a passion you will never forget. Set design is by Christine Jones, costume design is by Tony Award-winner Susan Hilferty, lighting design by Tony Award-winner Kevin Adams and sound design by Brian Ronan. SPRING AWAKENING opened on Broadway on December 10, 2006 at the Eugene O'Neill Theatre, following its world premiere at the Atlantic Theatre Co. The original cast recording of SPRING AWAKENING won the 2008 Grammy Award for Best Musical Show Album. SPRING AWAKENING is produced by Ira Pittelman, Tom Hulce, Jeffrey Richards, Jerry Frankel and the Atlantic Theatre Co. The New York Post calls SPRING AWAKENING "an unexpected jolt of sudden genius!" The Star-Ledger exalts, "The most explosive new musical since RENT!" The New York Observer calls it "a miracle that must be seen to be believed ... the best new musical in a generation." SPRING AWAKENING contains mature themes, sexual situations and strong language.

AVENUE Q

2004 BEST MUSICAL TONY WINNER
AVENUE Q is Broadway's smash-hit 2004 Tony Award® winner for BEST MUSICAL, BEST SCORE and BEST BOOK. A hilarious show full of heart and hummable tunes, AVENUE Q is about trying to make it in NYC with big dreams and a tiny bank account. Called "one of the funniest shows you're ever likely to see" by Entertainment Weekly, AVENUE Q features a cast of people and puppets who tell the story in a smart, risqué and downright entertaining way. The New Yorker calls it "SUBVERSIVE and UPROARIOUS!" AVENUE Q tells the story of bright-eyed college grad Princeton, who comes to New York with big dreams and a small bankroll. The only apartment he can afford is in a shabby outer-borough neighborhood filled with other would-be success stories: There's Brian, the unemployed comedian, who lives with his fiancée Christmas Eve, a Japanese born therapist with two graduate degrees and no clients. Next door, easy going slacker Nicky rooms with Republican investment banker Rod, who favors '40s musicals and seems to be hiding a secret. Then there's Kate Monster, a lonely but adorable kindergarten teaching assistant, and Trekkie Monster (no relation to Kate), an Internet porn addict with a heart of gold. And don't forget the building's superintendent, former child star Gary Coleman. Together, Princeton and his new friends struggle to find jobs, love and their ever elusive purpose in life. AVENUE Q is recommended for ages 16 and older.

THE CROW COLLECTION OF ASIAN ART PRESENTS SILK ROAD LOUNGE

World music, colorful sets, complimentary wine, beer tastings and DJ Woodtronic kick off monthly Silk Road Lounge series March 4 with "Indonesian exotica" group Space City Gamelan. First Thursdays | March – December 2010 | 6 – 9 p.m.

The Crow Collection of Asian Art (Gallery III on the 2nd floor) 2010 Flora Street, Dallas, TX 75201 The Crow Collection: Silk Road Lounge is free and open to the public. No reservations required. Join the Tour of the Collection at 6:30 pm.

For more information, please call 214-979-6430 or go to www.crowcollection.org.

Must be 21 with valid ID to be served wine/beer

Spice up the night with world music, tours, complimentary wine and beer tastings at Silk Road Lounge, a free monthly event premiering Thursday, March 4, from 6 – 9 p.m. at the Crow Collection of Asian Art (2010 Flora Street, Dallas, 75201). Showcasing local and international eclectic musical groups, the monthly series will transport sounds from Asia, North Africa, the Middle East and the Mediterranean. Enjoy music from DJ Woodtronic, host of KXT's "Sonic Assembly Power Hour," as he opens and closes the evening. Silk Road Lounge continues every first Thursday through December, featuring a different artist each month.

Thursday, March 4 – Space City Gamelan

Traditional gamelan music once provided ambiance for the courts of Indonesia as well as accompanying puppet plays and public ceremonies. Houston's Space City Gamelan adds a modern twist to this trance-inducing musical tradition. The group's music has been described as "Indonesian exotica" and "psychotropic jungle lullabies." spacecitygamelan.org

GAYLORD TEXAN RESORT: MURDER MYSTERY DINNER THEATER

Rebecca Angel has been murdered! It seems our 'angel' had fallen on hard times and intended to climb back up ~ any way she could. She would stop at nothing: committing bank robbery, blackmail, murder and yes, even double-parking her horse.

The problem is, she may have stolen from the wrong person, attempted blackmail at the most inopportune time, or hitched her horse to the wrong hitchin' post. It seems her little black diary makes for better copy than the National Enquirer ~ and everybody's secrets are out! Could Esperanza have a need for revenge or did she just not want the competition in a bad economy? Did Hyrum Q. Justice "see" something about Rebecca that made him snap? Did she know too much? Did the Reverend Brimstone's "private healings" go too far? Did Helen and her "friend" finally get away with murder? Watch and listen for the clues as we unravel the mystery of the "Fallen Angel." Be prepared to have some knee slappin' fun as you come along for one of the wildest Wild West rides of your life!

Texas Star Theater in the Riverwalk Café

Tickets are \$55 per person and include dinner at Riverwalk Café, show, tax, gratuity, and self-parking.
*Ticket purchases are non-refundable.

Performances are every Friday and Saturday, Texas Theater in Riverwalk Café, located inside Gaylord Texan Resort, 1501 Gaylord Trail, Grapevine, TX 76051.

Doors Open 7:00pm Showtime 8:00pm

Due to frequent sell-outs, reservations are strongly recommended.

Call (817) 778-2215 for reservations, or purchase tickets online at www.gaylordtexan.com

SPECIAL CONCIERGE DISCOUNTS

DALLAS STARS SPECIAL CONCIERGE DISCOUNTS

The entire season is available to be ordered from your Concierge. Please select dates, prices or seating areas and call or e-mail me soon. My prices will be the same all season but act now for better seats.

Please call or e-mail me with your order. Credit card payment only and they are waiving their per ticket surcharge on these orders! To receive this great deal order soon!!!

Jenny V. Crossland, Corporate Concierge, 214-863-4154 or jenny.crossland@cbre.com



Section Name	Gate Price	"A" Price	"B" Price	1/2 PRICE	\$10 OFF	AYCE*
Stars Club Preferred	\$120	-	-	\$40	\$110	-
Stars Club Luxury (Lower Bowl)	\$99	\$94	\$89	\$49.50	\$89	-
North Plaza (Lower Bowl)	\$85	\$80	\$75	\$42.50	\$75	-
South Plaza (Lower Bowl)	\$70	\$65	\$60	\$35	\$60	-
Premium Terrace	\$60	\$55	\$50	\$30	-	-
Priority Terrace	\$40	\$35	\$30	\$20	\$30	\$45
Terrace	\$30	\$25	\$20	\$15	\$20	\$35

See your Concierge or DallasStars.com for seating chart. *All-You-Can-Eat" Seating

"A" PRICE GAMES

Thu, Apr 8 Anaheim 7:30pm

"B" PRICE GAMES

Thu, Mar 4 St. Louis 7:30pm

Fri, Mar 12 Los Angeles 7:30pm

Sun, Mar 14 Colorado 2:00pm

Thu, Mar 18 Philadelphia 7:30pm

Sat, Mar 20 Ottawa 1:00pm

Sun, Mar 21 Phoenix 6:00pm

Fri, Apr 2 Edmonton 7:30pm

Tue, Apr 6 Chicago 7:30pm

"HALF PRICE" GAMES

Tue, Mar 2 Los Angeles 7:30pm

Tue, Mar 16 San Jose 7:30pm

Sun, Mar 21 Phoenix 6:00pm

Wed, Mar 31 San Jose 7:30pm

Tue, Apr 6 Chicago 7:30pm

"\$10 OFF" GAMES

Thu, Mar 4 St. Louis 7:30pm

Sun, Mar 14 Colorado 2:00pm

Thu, Mar 18 Philadelphia 7:30pm

Sun, Mar 20 Ottawa 1:00pm

Fri, Apr 2 Edmonton 7:30pm

Thu, Apr 8 Anaheim 7:30pm

2010 TEXAS RANGERS CONCIERGE PROGRAM

The entire season is available to be ordered from your Concierge. Please select dates, prices or seating areas and call or e-mail me soon. My prices will be the same all season but act now for better seats

Section Name	Premier Price	Gate Price	Mon./Tues. Games	Wed./Thurs./Fri. Games	Sat./Sun. Games
Cuervo Club (directly behind Home Plate)	\$140.00	\$125.00	\$112.00	\$112.00	\$112.00
Premium Infield (row 2-13, Sec. 18-34)	\$95.00	\$80.00	\$72.00	\$72.00	\$72.00
Club Infield (Sec. 222-230)	\$85.00	\$70.00	\$63.00	\$63.00	\$63.00
Lower Infield (row 14 & up, Sec. 18-34)	\$80.00	\$65.00	\$59.00	\$59.00	\$59.00
Lower Box (sec 14-17, 35-38, 115-136)	\$60.00	\$50.00	\$33.00	\$33.00	\$33.00
Club Box (sec 217-221, 231-235)	\$55.00	\$45.00	\$33.00	\$33.00	\$33.00
Upper Home Run Porch (sec 246-252)	\$39.00	\$34.00	\$25.00	\$28.00	\$31.00
Corner Box (sec 10-13, 39-42, 112-114, 137-139)	\$50.00	\$40.00	\$16.00	\$22.00	\$25.00
Lower Reserved (sec 3-9, 44-49)	\$35.00	\$30.00	\$12.00	\$18.00	\$20.00
Terrace Box (sec 201-216, 236-245)	\$30.00	\$25.00	\$10.00	\$10.00	\$15.00
Upper Box (sec. lower 316-335)	\$25.00	\$20.00	\$5.00	\$10.00	\$10.00
Bleachers (sec 50-54)	\$21.00	\$16.00	\$5.00	\$10.00	\$10.00
Upper Reserved					
(Upper 316-335, all of 301-315 & 336-338)	\$20.00	\$15.00	\$5.00	\$10.00	\$10.00
Grandstand Reserved (sec 339-345)	\$11.00	\$6.00	N/A	N/A	N/A

THE UPPER HOME RUN PORCH IS NOW AN ALL YOU CAN EAT LOCATION FOR EVERY GAME

The Premier Price will be charged for following games:

April 5th vs. Blue Jays	July 4th vs. White Sox	September 10th-12th vs. Yankees
May 21st-22nd vs. Cubs	August 10th-11th vs. Yankees	
June 26th vs. Astros	August 13th-16th vs. Red Sox	

Captain's Cash vouchers may be redeemed at any Rangers Ballpark concession stand or merchandise store. Vouchers are available in increments of \$10 and are valid for the entire 2010 season. Concierge Customers will receive a 10% discount off the face value.

Credit card payment only and they are waiving their per ticket surcharge on these orders! To receive this great deal order soon!!! Jenny V. Crossland, Corporate Concierge, 214-863-4154 or jenny.crossland@cbre.com

DALLAS SUMMER MUSICALS

The Trammell Crow Center Concierge is NOW offering seating for all the 2010 Dallas Summer Musicals' performances. The normal Ticketmaster service charges will be waived on Concierge orders, saving tenants \$8-\$10/person. Tenants are encouraged to order ASAP for best seats. The remaining show:

Phantom of the Opera	Music Hall	February 17- March 14, 2010
Rain - Beatles	Music Hall	March 16-21, 2010
Xanadu	Music Hall	April 6 - 18, 2010
Music of Andrew Lloyd Weber	Music Hall	April 20-25, 2010
Little House on The Prairie	Music Hall	May 11-23, 2010
Wicked	Music Hall	May 26-June 27, 2010
Dream Girls	Music Hall	June 30 - July 18, 2010
Shrek	Music Hall	Sept 28 - Oct 17, 2010

Please list several date/seating options, in case your top choices are not available. Although Producer's Circle, Center & Side Orchestra & 1st Balcony seats are officially listed as sold out to season ticket holders for DSM shows, tenants can request these sections as long as at least 1 seating option outside of these areas is listed. For seating charts, visit www.dallassummermusicals.org. The schedule and pricing are at the concierge desk or can be e-mailed to you if requested. Orders must be pre-paid with a credit card by phone, e-mail or in person. All sales are final; no cancellations, refunds or date changes. Thank you!

CONCIERGE DISCOUNTS

Cash or Check Payment ONLY. No Refunds or Exchanges.

While Supplies Last. All Prices Include Tax.

MOVIES

	Regular	Concierge
AMC Cinema		\$6.00
AMC Unrestricted tickets		\$7.50
Angelika Film Center		\$5.50
Cinemark Classic Supersaver, Restricted		\$6.25
Cinemark Platinum Supersaver, Unrestricted		\$7.25
Magnolia/Inwood Gold		\$7.50
Magnolia/Inwood Platinum		\$8.00
Studio Movie Grill		\$6.25

ENTERTAINMENT

Dallas Zoo	Adult	\$10.00	\$7.00
	Child (3-11)	\$7.00	\$4.00
Fort Worth Zoo	Adult	\$12.50	\$9.50
	Child (Ages 3-12)	\$8.00	\$6.50
	Seniors (age 65+)	\$7.00	\$5.50
Six Flags Over Texas	Adult	\$53.99	\$27.00
	Child (Age 3 - 48")	\$33.48	\$27.00
	Season Pass		\$65.00
	Play Pass		\$55.00
Sixth Floor Museum	Adult	\$13.50	\$10.50
	Child (6-18)	\$12.50	\$6.00

CONCIERGE DISCOUNTS FOR AT&T PERFORMING ARTS CENTER

The Trammell Crow Center Concierge is offering seating for several performances at The AT&T Performing Arts Center. The service charges will be waived on most Concierge orders and discounts may be available. Tenants are encouraged to order as soon as possible. Please email your list of several date and seating options in case your top choices are not available to Jenny. Crossland@CBRE.Com. The schedules and pricing are at the Concierge desk. Orders must be pre-paid with a credit card by phone, email or in person. All sales are final; no cancellations, refunds or date changes. Thank you.

Lexus Broadway Series: No fees and \$5-\$15 off on weeknights; no fees weekends.

Winspear Opera House	
Spring Awakening	March 23-April 4, 2010
Avenue Q	May 25 - June 6, 2010
Beauty and The Beast	July 13-25, 2010

Dallas Theater Center: No fees, \$15% on all dates.

Death of a Salesman (Wyly)	April 16-May 16, 2010
It's a Bird...It's a Plane...It's Superman! (Wyly)	June 18-July 25, 2010

Jazz Roots: No fees, \$5 off tickets

Dee and Charles Wyly Theatre	
Piano Latino:	Monday, March 1, 2010

TITAS No fees, 15% on all dates

DOMINIC WALSH DANCE COMPANY	March 17 and 18, 2010 at 8:00 p.m.
SOWETO GOSPEL CHOIR	March 21, 2010 at 8:00 p.m.
MARK MORRIS DANCE COMPANY	June 18 and 19, 2010 at 8:00 p.m.

The Dallas Opera: Winspear Opera House

Così fan Tutte	February 12, 14m, 18, 20, 26, 28m
Don Pasquale	February 19, 21m, 24, 27, March 5, 7m
Moby Dick	April 30, May 2m, 5, 8, 13, 16m
Madame Butterfly	May 7, 9m 12, 15, 20 23m

Texas Ballet Theater: 20% off

Winspear Opera House	
Romeo & Juliet	March 12-14, 2010
The Sleeping Beauty	June 11-13, 2010

Dallas Black Dance Theatre 20% off, no fees/Wyly Theatre

Spring Celebration Series	May 19-23
choreography by Camille Brown, Gene Hill Sagan, and Nejala Y. Yatkin, with guest artists Dance Theatre of Harlem Ensemble	